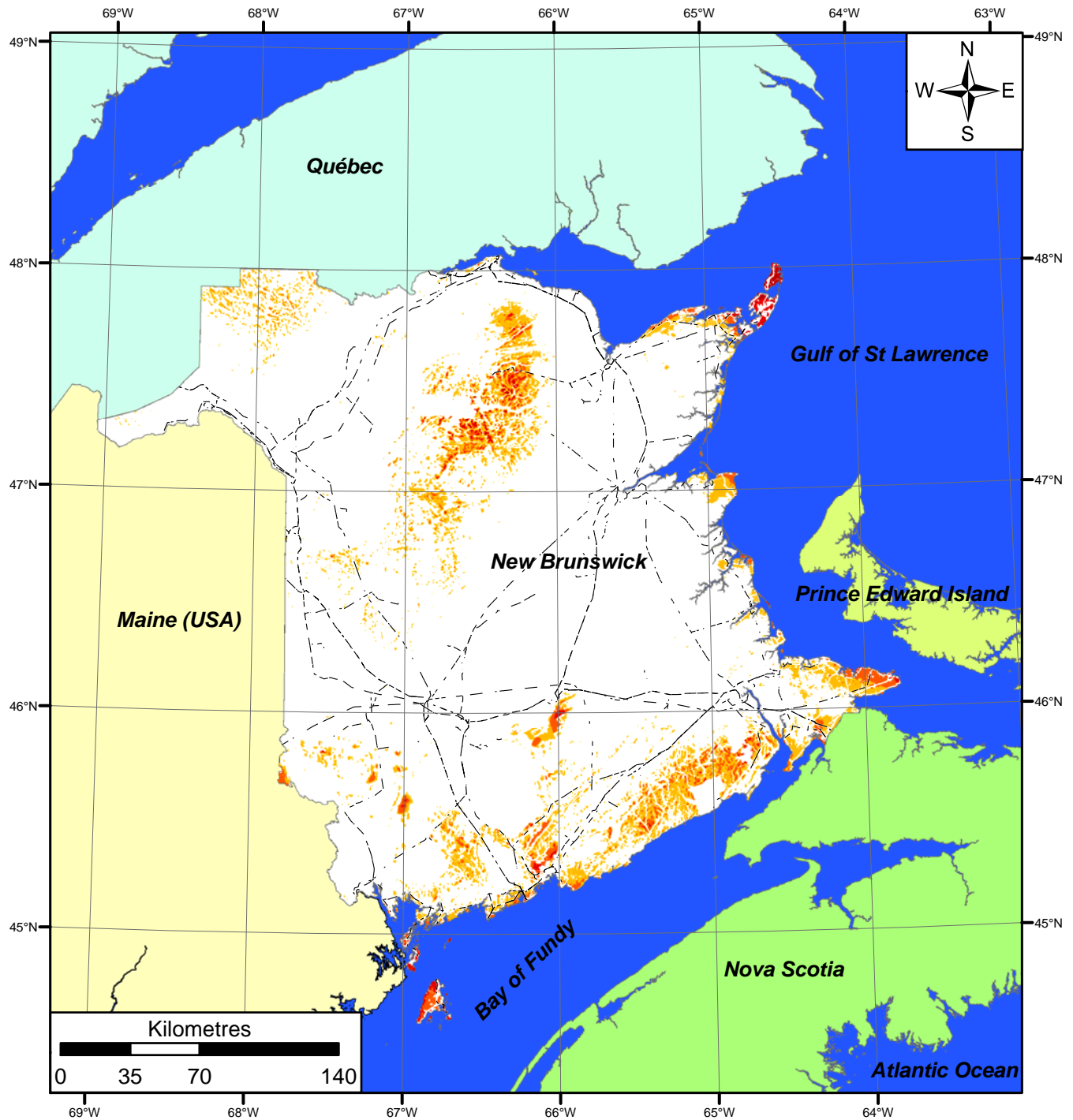
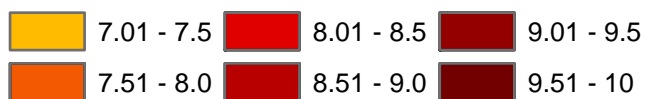




Exploitable Wind Resource Map of New Brunswick



Wind speed (m/s) at 80 m agl



-- Power transmission lines

Projection : Double stereographic
Datum : NAD83

René Thibault and Yves Gagnon
K. C. Irving Chair in Sustainable Development
Université de Moncton
<http://www.umoncton.ca/chairedd>
Août 2007

This map describes the exploitable wind resource of the Province of New Brunswick at 80 meters above the ground level (agl) at a resolution of 200 m based on five years of meteorologic analysis RUC (Rapid Update Cycle) data. Although it is believed to represent an accurate overall picture of the wind energy resource, estimates at any location should be confirmed by measurements. The authors are not responsible of the use of the present map.